

# EAST RIDGE VILLAGE



CLASSIC CHARM :: TIMELESS DESIGN

3128 sq ft  
4 bedroom  
2.5 bath

## THE SEQUOIA

East Ridge Village offers a variety of classic home designs carefully selected for our community. Nestled amidst the natural beauty of Moon Mountain and featuring tree-lined streets; classic architectural elements and quality design details, East Ridge Village will be a truly timeless community.

SELECT THE HOME DESIGN AND LOCATION OF YOUR CHOICE

VISIT US ON-LINE :: [eastridgevillage.net](http://eastridgevillage.net)

Mike Miller :: Principal Broker office 541-334-7653 cell 541-954-4454



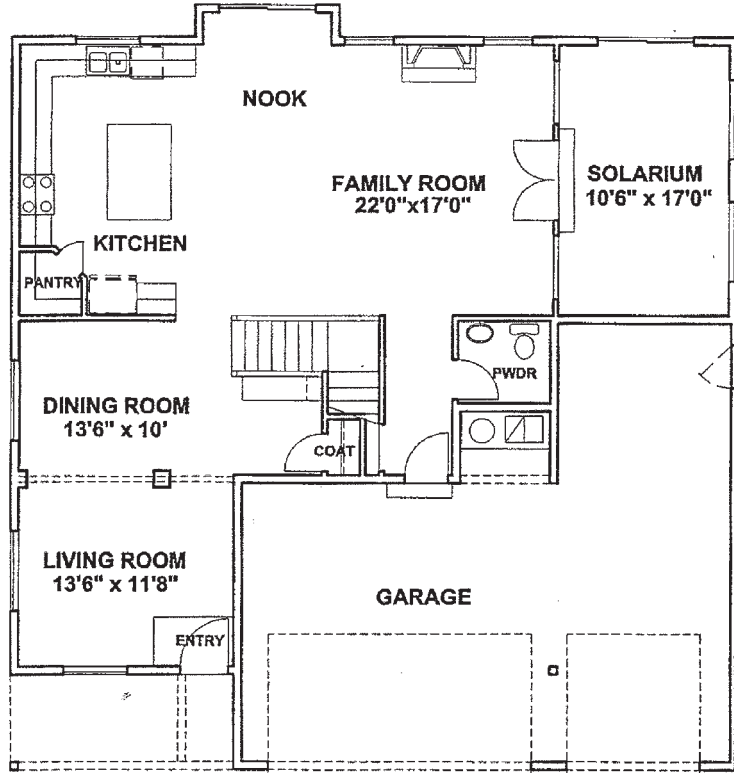
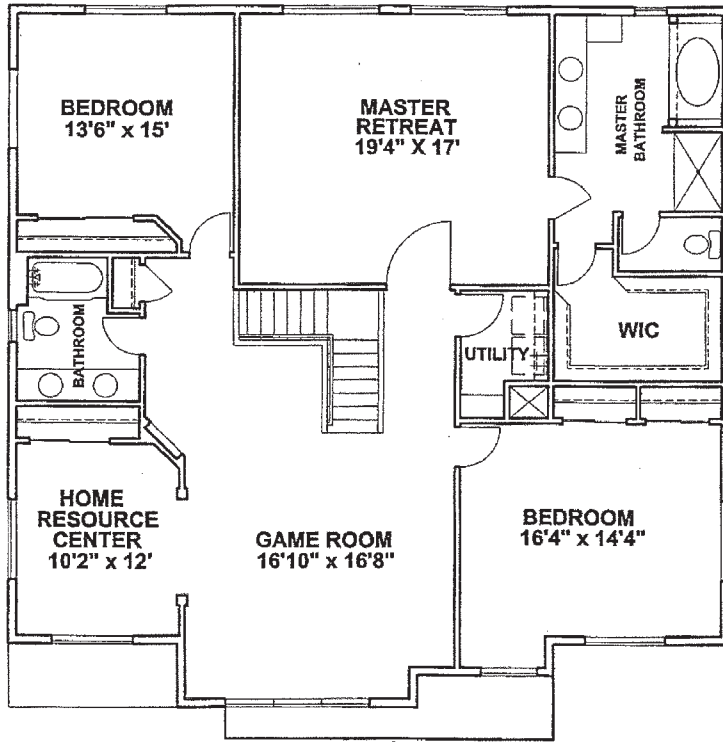


CLASSIC CHARM :: TIMELESS DESIGN

3128 sq ft  
4 bedroom  
2.5 bath

# THE SEQUOIA

## second floor



## first floor