

# EAST RIDGE VILLAGE

CLASSIC CHARM :: TIMELESS DESIGN



1861 sq ft  
3 bedroom  
2.5 bath

## THE SANTIAM

East Ridge Village offers a variety of classic home designs carefully selected for our community. Nestled amidst the natural beauty of Moon Mountain and featuring tree-lined streets; classic architectural elements and quality design details, East Ridge Village will be a truly timeless community.

SELECT THE HOME DESIGN AND LOCATION OF YOUR CHOICE

VISIT US ON-LINE :: [eastridgevillage.net](http://eastridgevillage.net)



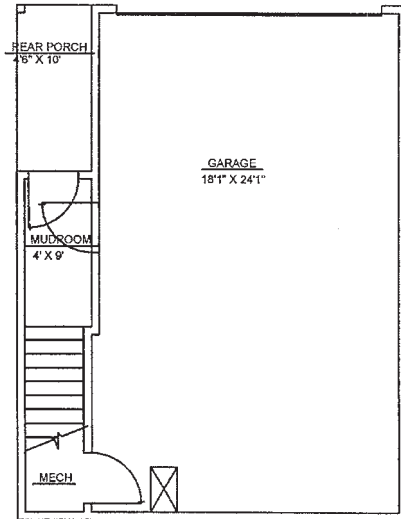
Mike Miller :: Principal Broker office 541-334-7653 cell 541-954-4454



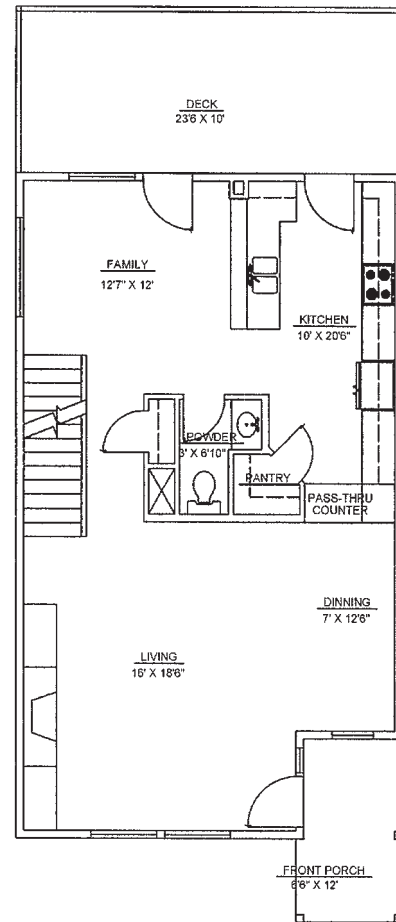
CLASSIC CHARM :: TIMELESS DESIGN

1061 sq ft  
3 bedroom  
2.5 bath

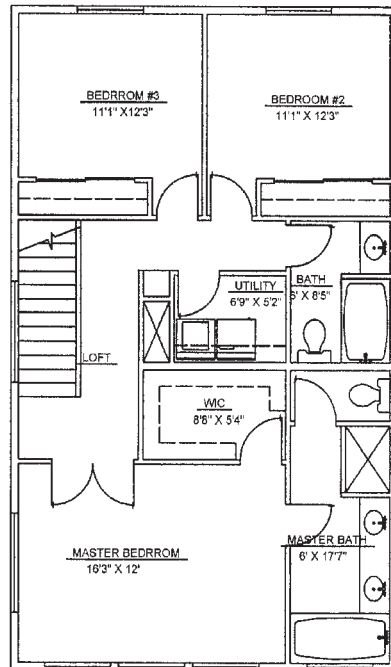
### first floor



### second floor



### third floor



## THE SANTIAM