

EAST RIDGE VILLAGE



CLASSIC CHARM :: TIMELESS DESIGN

2068 sq ft
3 bedroom
2.5 bath

THE METOLIUS

East Ridge Village offers a variety of classic home designs carefully selected for our community. Nestled amidst the natural beauty of Moon Mountain and featuring tree-lined streets; classic architectural elements and quality design details, East Ridge Village will be a truly timeless community.

SELECT THE HOME DESIGN AND LOCATION OF YOUR CHOICE

VISIT US ON-LINE :: eastridgevillage.net



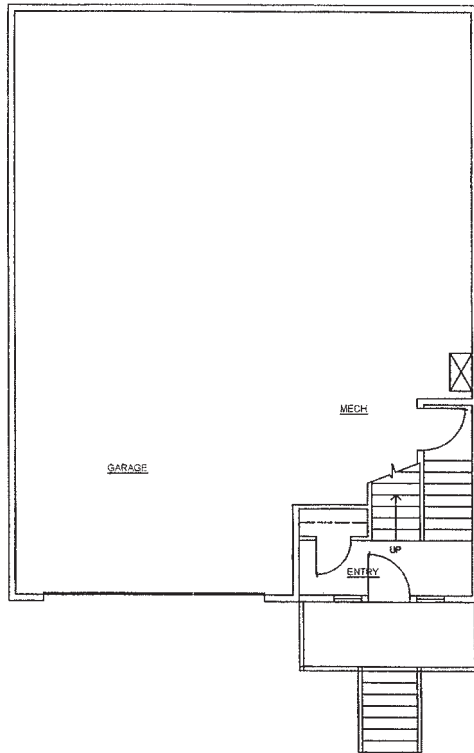
Mike Miller :: Principal Broker office 541-334-7653 cell 541-954-4454



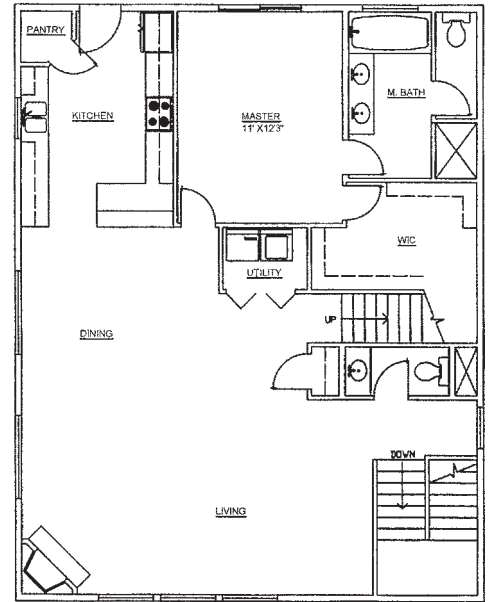
CLASSIC CHARM :: TIMELESS DESIGN

2068 sq ft
3 bedroom
2.5 bath

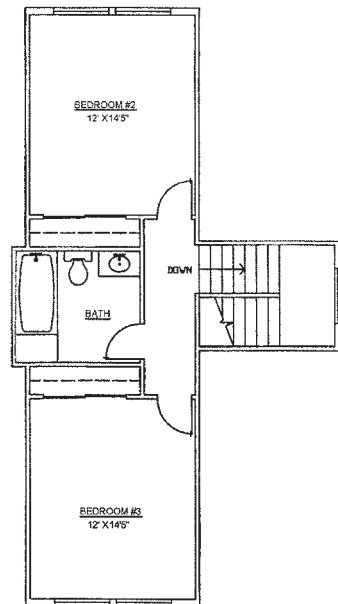
first floor



second floor



third floor



THE METOLIUS